

News release—MSU Extension Diagnostic Clinics

Date: May 7, 2015

From: Duke Elsner, MSU Extension, Grand Traverse County 231-922-4822

MSU Extension will hold a series of diagnostic clinics for landscape and garden plant problems on Wednesdays, 10 am to 2 pm, from May 13 through September 2, 2015. MSU staff and volunteers will be on-hand to assist with the identification of plants, weeds, insects and diseases and to give advice on solving home landscape problems.

Except for the last Wednesdays of the month, the diagnostic clinics will be held at the Grand Traverse MSU Extension office, 520 W. Front Street, in Traverse City. On the last Wednesday of each month the clinic will be held at the Leelanau County MSU Extension office located at 8527 E. Governmental Center Drive off of M-206 west of Suttons Bay.

For assistance outside of clinic hours, feel free to contact MSU Extension's Lawn & Garden Hotline at 1-888-678-3464 (available Monday-Friday, 9am-noon / 1pm-4pm) or see the resources available at the migarden.msu.edu website.

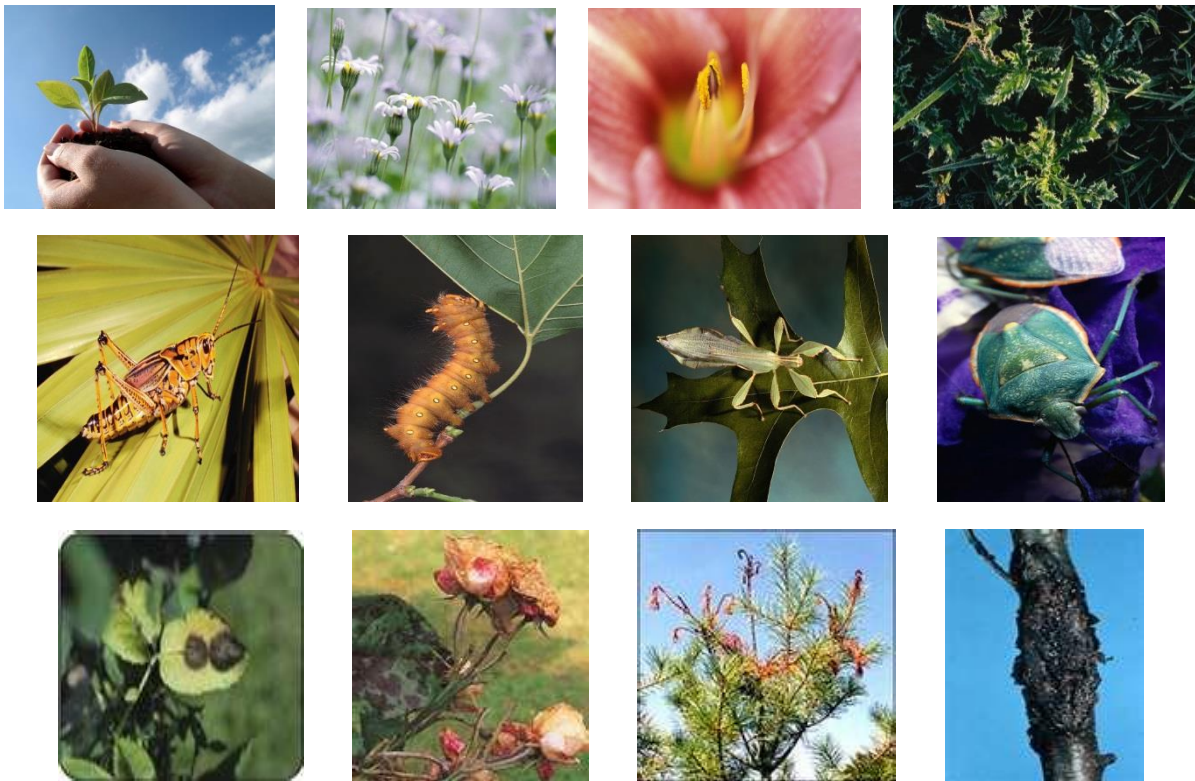
Diagnostic Clinics

Wednesdays, 10:00am – 2:00pm

May 13 through September 2

520 W. Front St., Traverse City most Wednesdays;
Leelanau County Office Bldg., last Wednesday of each month

Plant, weed, bug and disease identification



Advice on solving landscape problems

For assistance outside of clinic hours,
Dial 1-888-678-3464 to reach MSUE's Lawn & Garden Hotline,
available Monday-Friday, 9am-noon / 1pm-4pm.
or see the migarden.msu.edu website